

LOT n°04
TERROUX 25
VILLA 25 E

Surface brute habitable totale:
149.5 m²

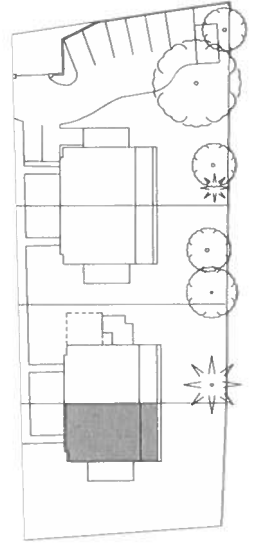
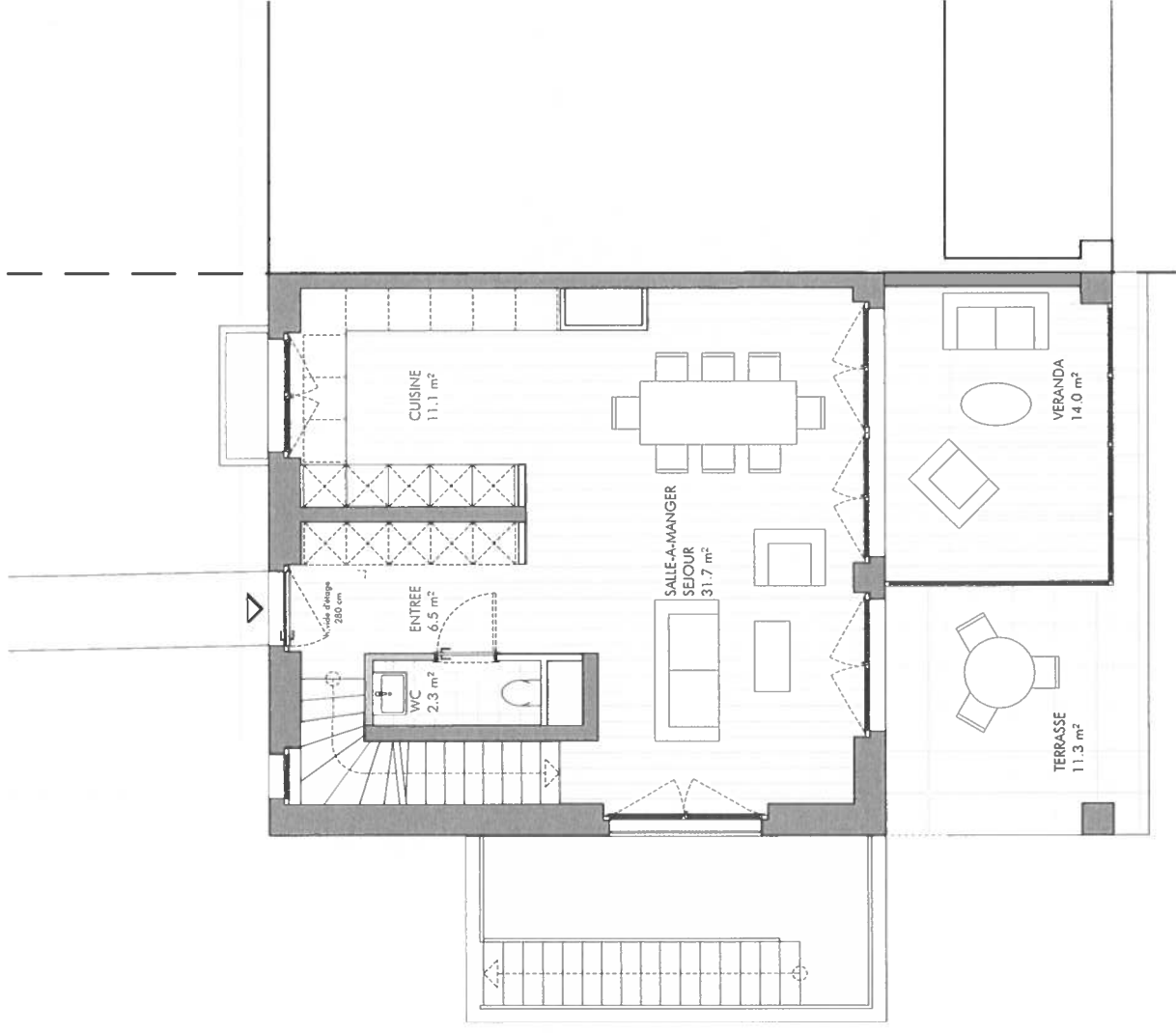
Plan:
REZ-DE-CHAUSSEE

Surface nette habitable:
51.6 m²

Surface brute habitable:
70.0 m²

Programme:

01: SALLE A MANGER/SEJOUR	31.7m ²
02: CUISINE	11.1m ²
03: ENTREE	6.5m ²
04: WC VISITEURS	2.3m ²
05: VERANDA	14.0m ²
06: TERRASSE	11.3m ²



14.05.2024